

JMLA Silber - Tonleitern

Oboe (b - f³) - Wiener Oboe (h - f³)

portato, legato, staccato



NIEDERÖSTERREICHISCHER
BLASMUSIKVERBAND

♩ = 108

E - Dur

H - Dur

Fis - Dur

Cis - Dur

JMLA Silber - Tonleitern

Oboe (b - f³) - Wiener Oboe (h - f³)

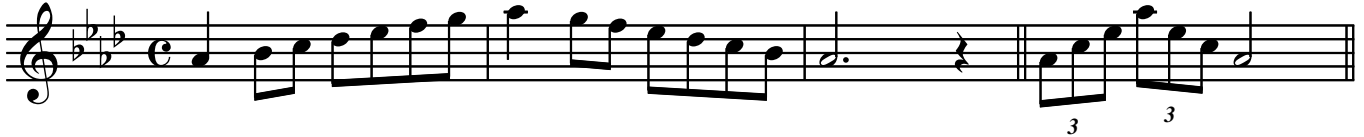
portato, legato, staccato



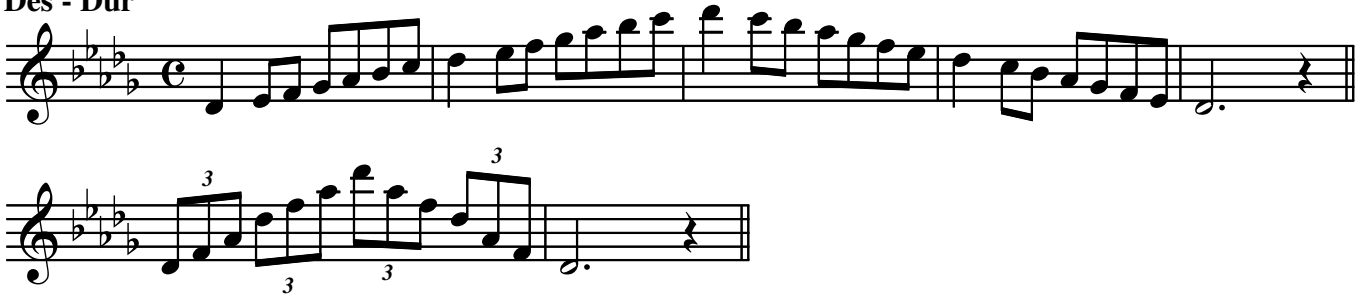
NIEDERÖSTERREICHISCHER
BLASMUSIKVERBAND

♩ = 108

As - Dur



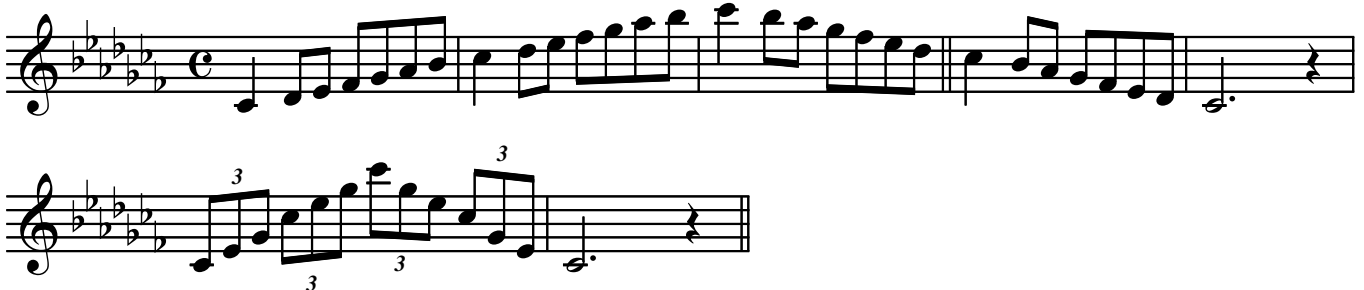
Des - Dur



Ges - Dur



Ces - Dur



JMLA Silber - Tonleitern

Oboe (b - f³) - Wiener Oboe (h - f³)

portato, legato, staccato



NIEDERÖSTERREICHISCHER
BLASMUSIKVERBAND

♩ = 108

cis - Moll

Three staves of musical notation for the cis-Moll scale. The first two staves show the ascending and descending scales. The third staff shows a triplet exercise.

gis - Moll

Two staves of musical notation for the gis-Moll scale. The first staff shows the ascending scale, and the second staff shows the descending scale with triplet exercises.

dis - Moll

Three staves of musical notation for the dis-Moll scale. The first two staves show the ascending and descending scales. The third staff shows a triplet exercise.

JMLA Silber - Tonleitern

Oboe (b - f³) - Wiener Oboe (h - f³)

portato, legato, staccato



NIEDERÖSTERREICHISCHER
BLASMUSIKVERBAND

♩ = 108

ais - Moll

f - Moll

b - Moll

JMLA Silber - Tonleitern

Oboe (b - f³) - Wiener Oboe (h - f³)

portato, legato, staccato



NIEDERÖSTERREICHISCHER
BLASMUSIKVERBAND

♩ = 108

es - Moll

as - Moll

chromatische Skala