

JMLA Silber - Tonleitern

Saxofon (b - fis³)

portato, legato, staccato



NIEDERÖSTERREICHISCHER
BLASMUSIKVERBAND

♩ = 108

E - Dur

H - Dur

Fis - Dur

Cis - Dur

JMLA Silber - Tonleitern

Saxofon (b - fis³)

portato, legato, staccato



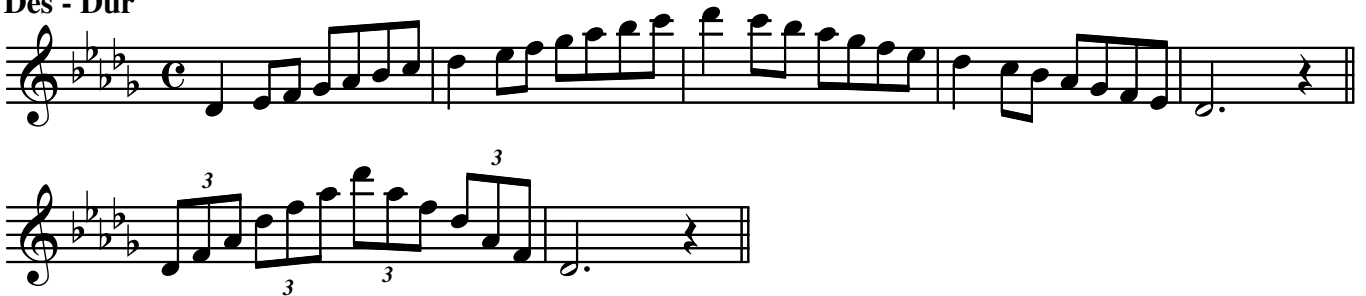
NIEDERÖSTERREICHISCHER
BLASMUSIKVERBAND

♩ = 108

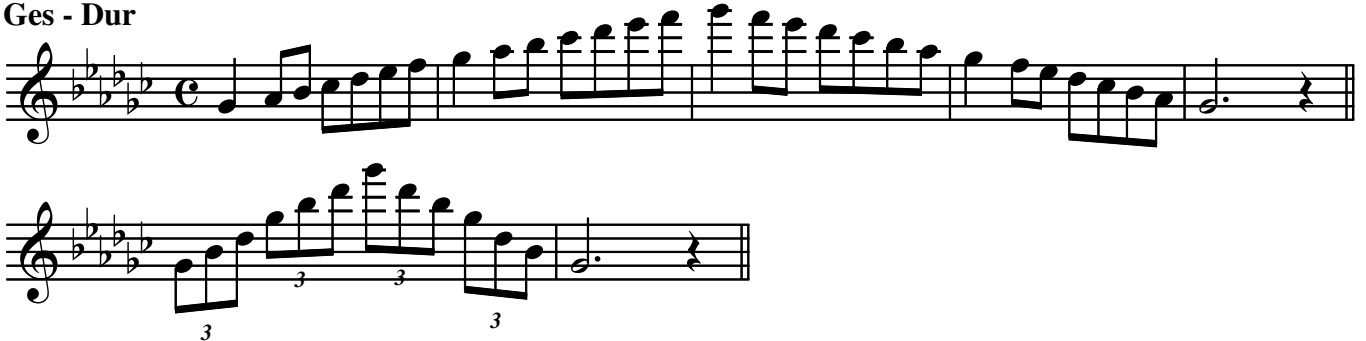
As - Dur



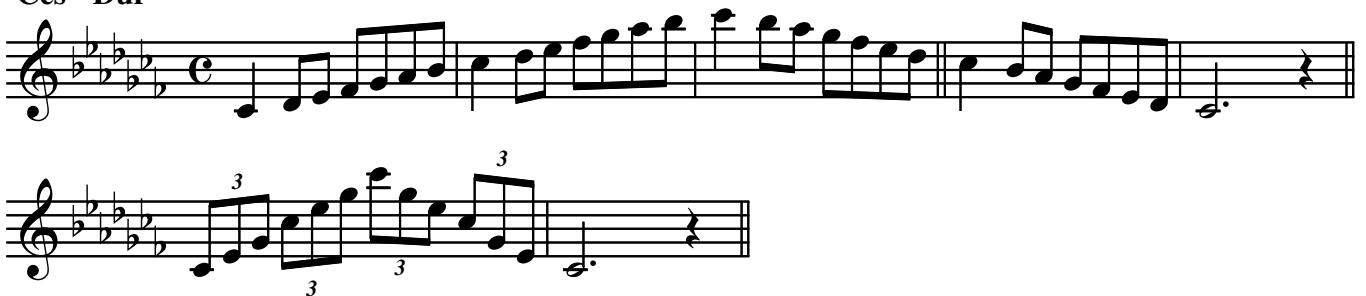
Des - Dur



Ges - Dur



Ces - Dur



JMLA Silber - Tonleitern

Saxofon (b - fis³)

portato, legato, staccato



NIEDERÖSTERREICHISCHER
BLASMUSIKVERBAND

♩ = 108

cis - Moll

gis - Moll

dis - Moll

JMLA Silber - Tonleitern

Saxofon (b - fis³)

portato, legato, staccato



NIEDERÖSTERREICHISCHER
BLASMUSIKVERBAND

♩ = 108

ais - Moll

Musical notation for the A minor scale (ais - Moll). The notation is in treble clef with a common time signature (C). It consists of three staves. The first two staves show the ascending and descending scales with natural and sharp accidentals. The third staff shows the descending scale with natural and sharp accidentals, followed by a triplet exercise.

f - Moll

Musical notation for the F minor scale (f - Moll). The notation is in treble clef with a common time signature (C). It consists of three staves. The first two staves show the ascending and descending scales with natural and flat accidentals. The third staff shows the descending scale with natural and flat accidentals, followed by a triplet exercise.

b - Moll

Musical notation for the B minor scale (b - Moll). The notation is in treble clef with a common time signature (C). It consists of three staves. The first two staves show the ascending and descending scales with natural and flat accidentals. The third staff shows the descending scale with natural and flat accidentals, followed by a triplet exercise.

JMLA Silber - Tonleitern

Saxofon (b - fis³)

portato, legato, staccato



NIEDERÖSTERREICHISCHER
BLASMUSIKVERBAND

♩ = 108

es - Moll

as - Moll

chromatische Skala